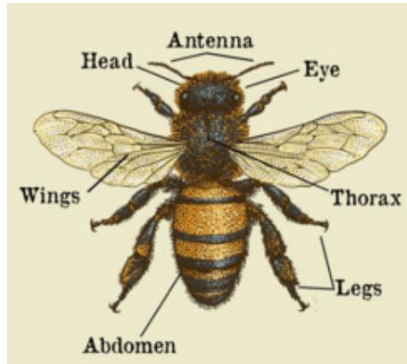


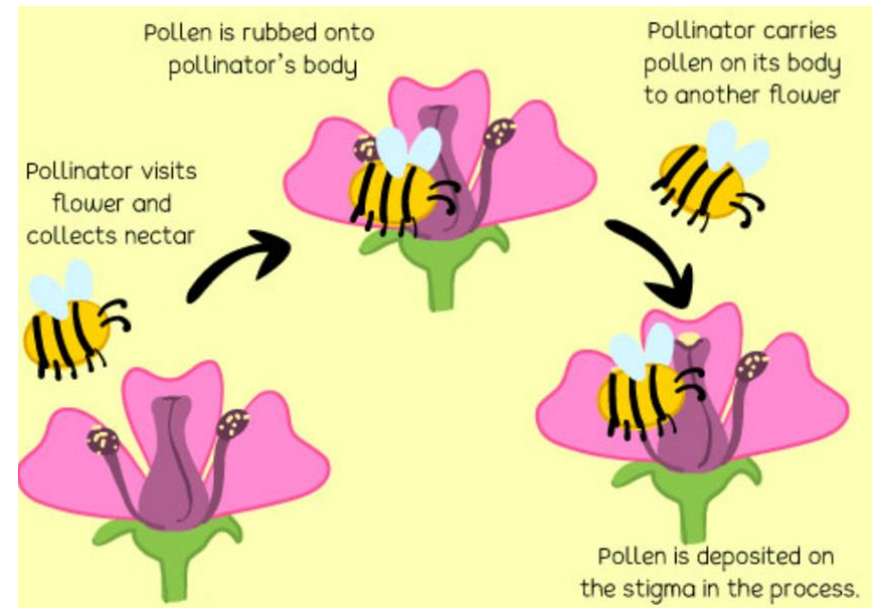
Y3 Knowledge Organiser: Bee Kind!

The Honey Bee



The Colony

Bees live in groups called colonies. A colony contains between 20,000 and 60,000 bees but only one queen!



Honey

Honey is made from nectar. A bee can only carry a tiny amount of nectar back on each trip from the hive. It takes about 22,700 flying trips to fill one ordinary-sized jar of honey (450g)!

A worker bee lives for just five or six weeks. In this time the worker bee will make about 1/12 of a teaspoon of honey!

Did you know...?

A spoonful of honey will help to soothe your sore throat if you have a cough.



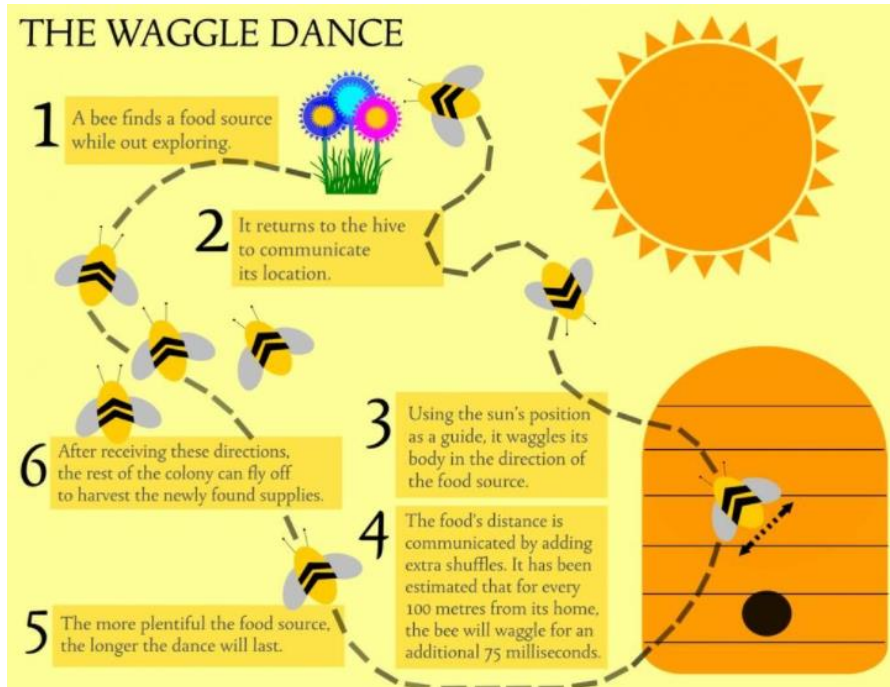
Honey is also sometimes used to help heal wounds as it is good at killing off bacteria.

Key Vocabulary:

nectar	Nectar is a sugary liquid produced by the flower of plants to encourage pollination by insects.
honey	A sweet sticky yellowish-brown fluid made by bees from nectar.
pollen	A fine powdery substance consisting of microscopic grains. While an animal drinks the nectar, pollen from the flower sticks to its body.
pollination	The process where pollen is transferred from the anther, the male part of a flower, to the stigma, the female part of a flower.
colony	A community of animals of one kind living close together or forming a physically connected structure.

Teamwork

The bees return to the hive and let the other bees know where the nectar is using a series of movements called The Waggle Dance!



Bees are at risk of dying out if we do not start to make changes. We need to save and protect these creatures as they make a huge impact to our environment!

Bees pollinate 70 of the 100 crop species that feed 90% of the world's population. These crops include:

- Apples
- Turnips
- Cucumbers
- Passion fruits
- Pears
- Melons
- Cherries
- Peaches
- Nuts
- Avocadoes

Beyond food, pollinators like bees also contribute directly to medicines, biofuels, fibres like cotton and linen, and construction materials. Hence the World Bee Day started in 2018.



Expert Flyers

A honeybee has two sets of wings that it can beat up to 230 times a second! They make the air vibrate (shake) which makes a buzzing sound.



The distance each bee flies in its life is astonishing. It is possible for bees to fly as far as 5 miles for food, however an average distance would be less than a mile from the hive. A strong colony, around 60,000 bees, therefore flies the equivalent distance from Earth to the Moon everyday!

Be a Bee Friend!

It is sad that the numbers of bees are declining, however there are many ways we can help them:

- Grow some bee-friendly plants like sunflowers and lavender.
- Don't pick wild flowers. Leave them so the bees can gather their nectar.
- If you have a garden, leave a little pile of scrap wood and sticks in a hidden corner. Bees and other insects can use it as a shelter when they need to.



Bees can get very tired. If you see a sleepy bee in your garden, mix two teaspoons of sugar with one of water and carefully place it next to the bee.